

MVM PLUS



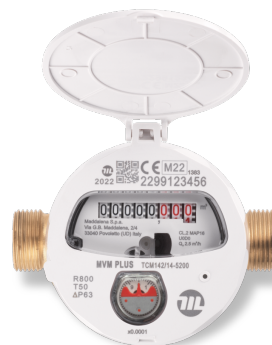
VOLUMETRIC ROTARY PISTON METER

MVM PLUS is the water meter for applications in the Utilities sector that guarantees maximum accuracy and reliability in all installation conditions. Its extremely low starting flow rate and its wide measuring range allow the accounting of the entire consumption, making it easier to identify leaks. Robust, durable, suitable for the most challenging environments and types of installation. Flat-bottom, moulded brass case for easy installation. Its inner cage improves measurement performance and provides better resistance against suspended solids. It can be equipped with the latest remote data transmission technologies.

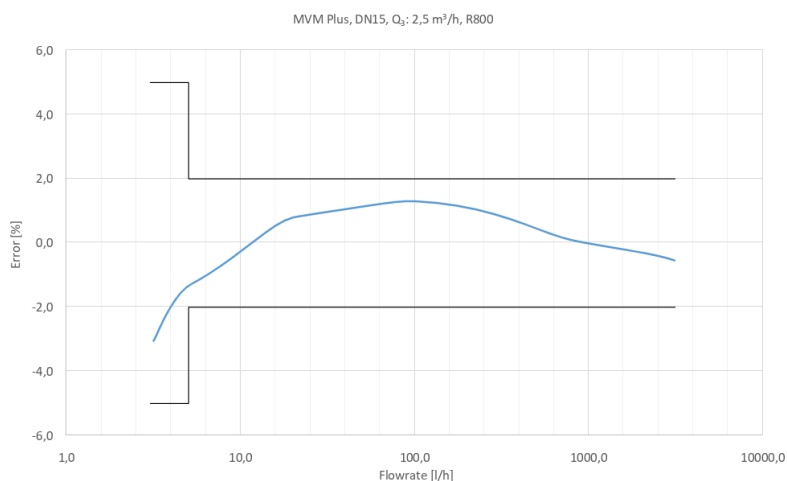
MVM PLUS

FEATURES

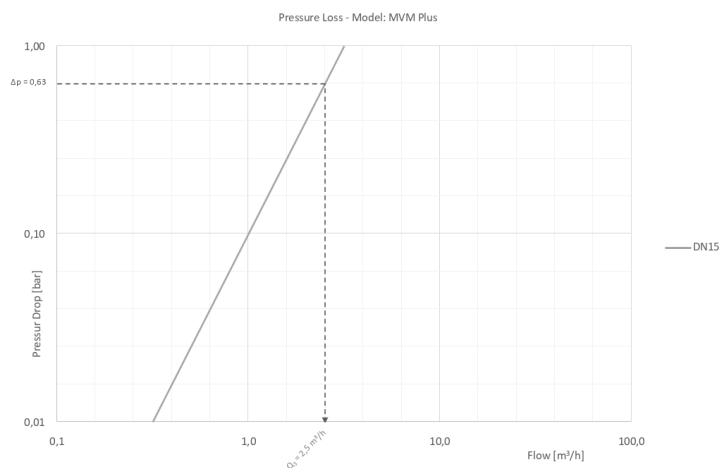
- Volumetric rotary piston meter for cold water
- Ideal for utilities and outdoor installation
- MID-certified: R max 800
- DN: 15
- Health certifications available for a number of countries
- Can be installed in all positions while maintaining its metrological characteristics
- High protection against external magnetic fields
- Sealed register (IP68 copper/glass) able to fully prevent any condensation
- The register can be rotated 360°
- Can be supplied fitted with wired or radio communication module
- Ready for static pulse emitter 1P=1L



TYPICAL ERROR CURVE



HEAD LOSS DIAGRAM



METROLOGICAL PERFORMANCE

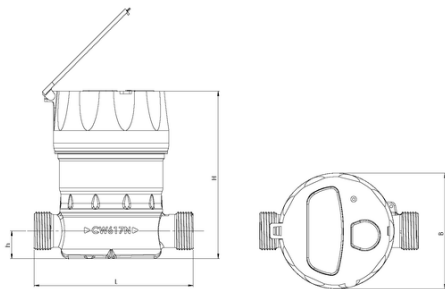
Size	mm	15
	in	½
Module B no.	TCM 142/14 – 5200	
Module D no.	0119-SJ-A010-08	
Q ₃ /Q ₁ = R Referred to installation position	Tutte ≤ 800	
MID standard performance *		
Q ₃	m³/h	2,5
Q ₄	m³/h	3,13
R		400
Q ₁	l/h	6,25
Q ₂	l/h	10

* Other values of R available upon request.

TECHNICAL DATA

Maximum permissible error between Q ₁ and Q ₂ (excluded)	+/- 5%	
Maximum permissible error between Q ₂ (included) and Q ₄	+/- 2% with water temperature ≤ 30°C	
Temperature class	T30	
Flow profile sensitivity classes	U0 – D0	
Starting flow rate	l/h	0,4
Head loss	ΔP63	
Nominal pressure	bar	16
Maximum reading	m³	99.999
Minimum reading	l	0,02
Indicative weight	kg	0,75

DIMENSIONS



Size	mm	15
	in	1/2
Thread	in	G 3/4 B
L	mm	110
H	mm	118,5
h	mm	19
B	mm	86

COMMUNICATION MODULES



ARROW^{WAN} 169



ARROW^{WAN2}



ARROW^{WAN} NB-IoT



FLOWPULSE

For more information on all the accessories available, consult the specific technical data sheets on the website www.maddalena.it

