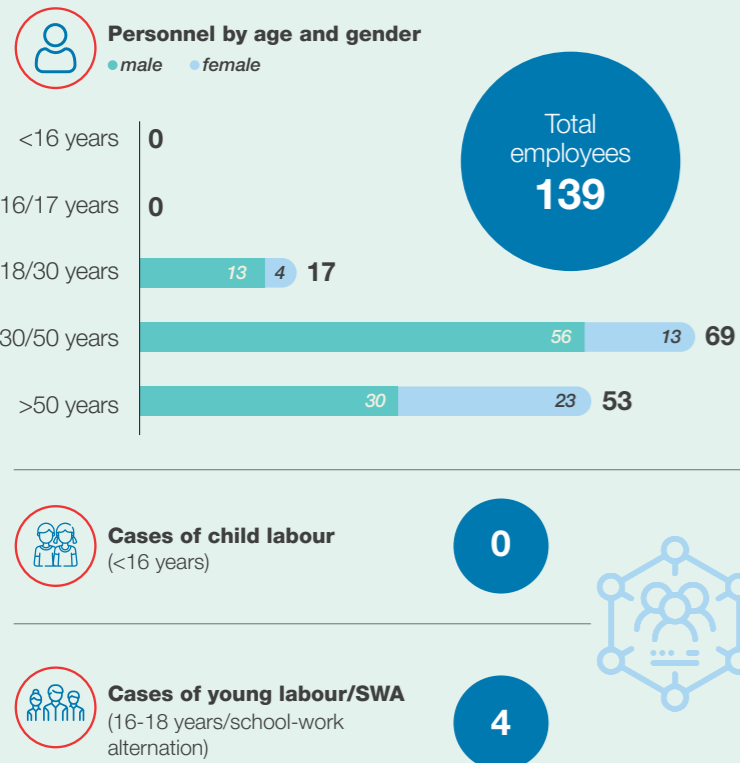


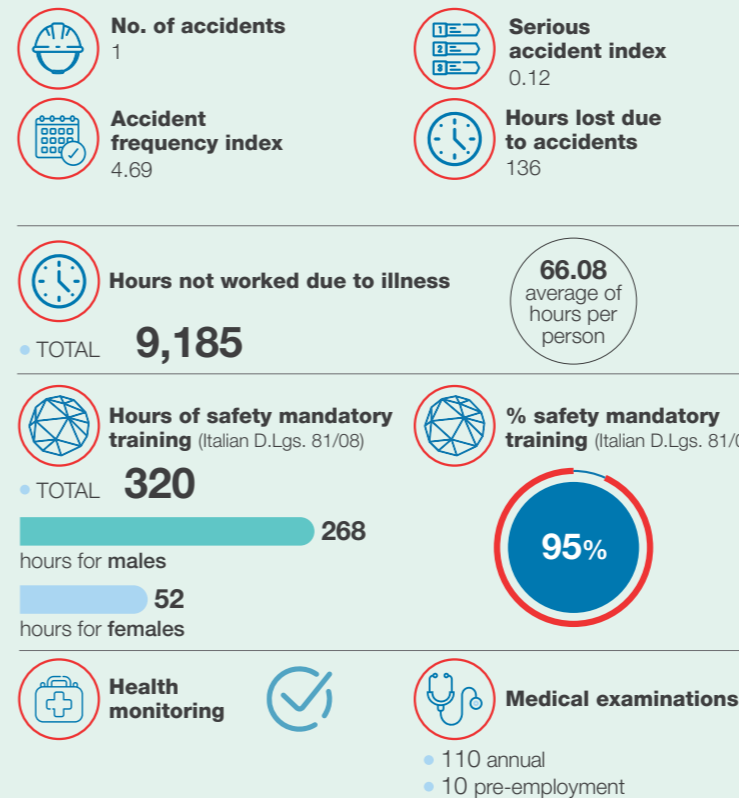
CHILD LABOUR 1



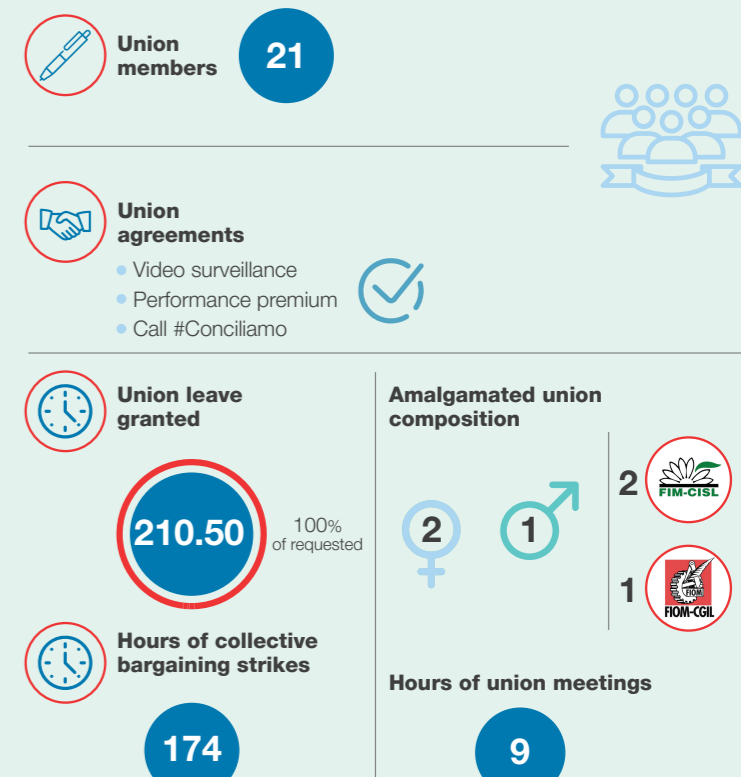
FORCED OR COMPULSORY LABOUR 2



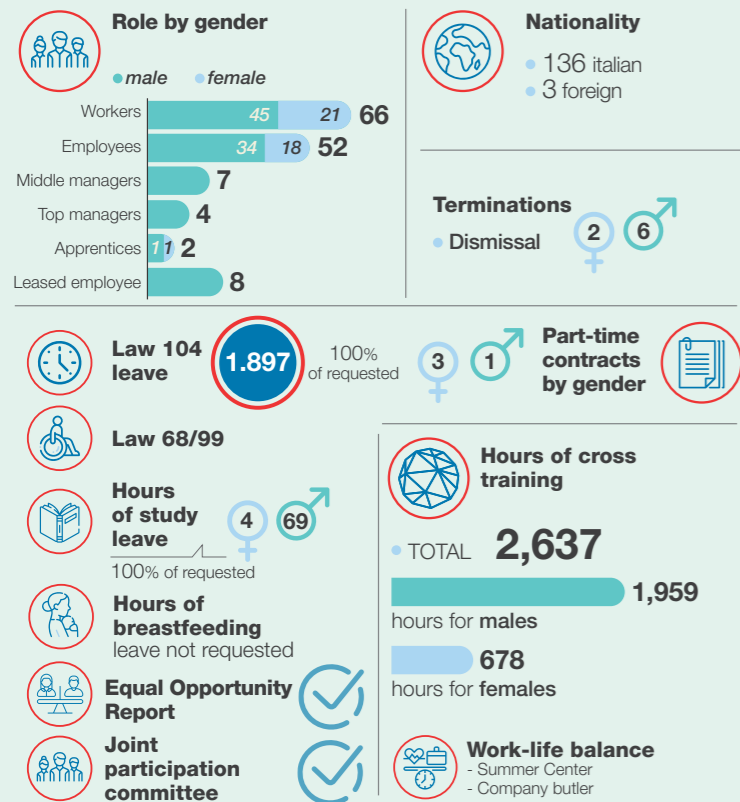
HEALTH AND SAFETY 3



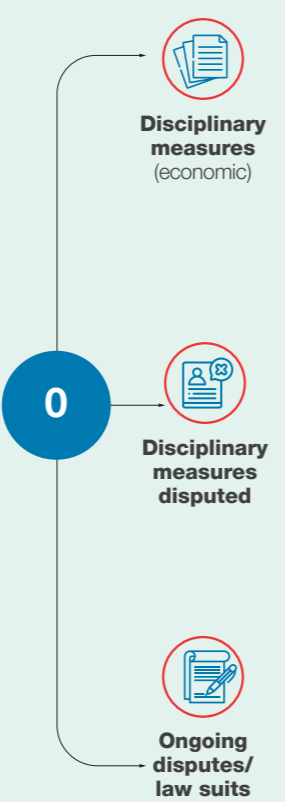
FREEDOM OF ASSOCIATION 4



DISCRIMINATION 5



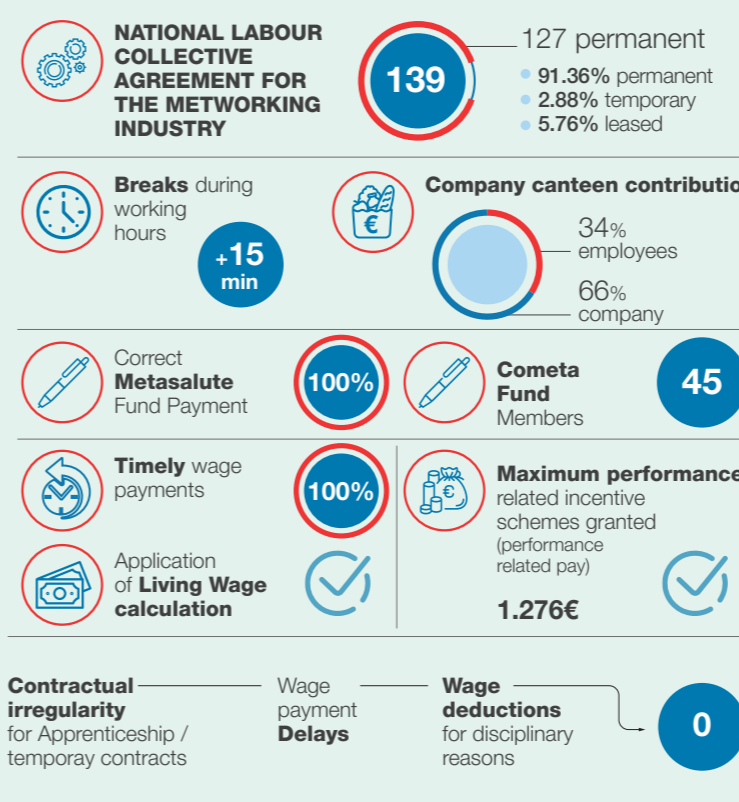
DISCIPLINARY PRACTICES 6



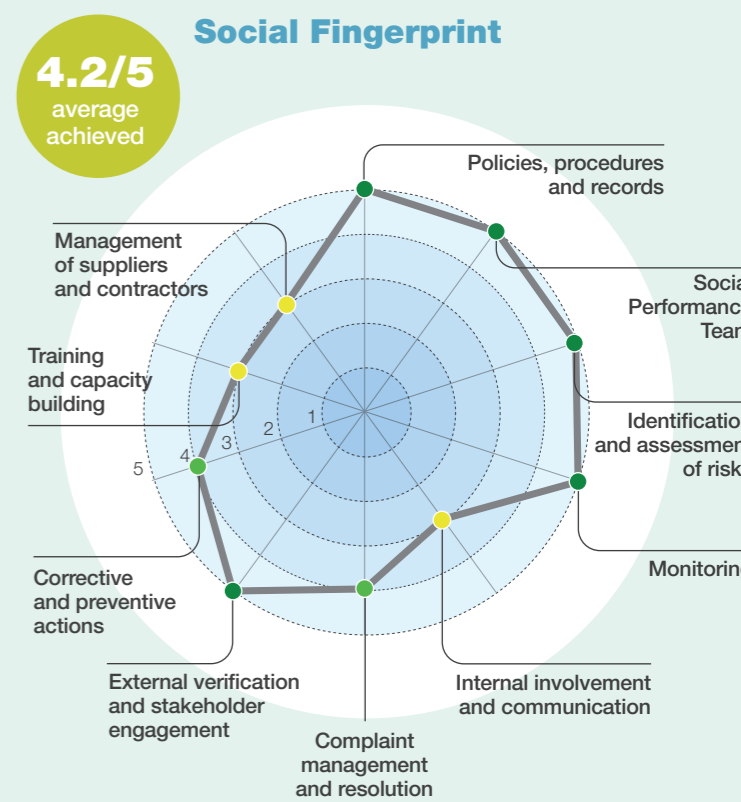
WORKING HOURS 7



REMUNERATION 8



MANAGEMENT SYSTEM 9



1 Number SPT reports (Social Performance Team) received and resolved requirement 7

All those who wish to submit a report, complaint or suggestion on topics related to RSI SA8000 can choose from the following methods and write to:

- Workers' representatives of the SA8000 Social Performance Team, who can be contacted either anonymously or not via the Google Form https://bit.ly/SA8000Maddalena_spt
- CISE Certification Body by email to info@lavoroetico.org
- SAAS (Social Accountability Accreditation Service) via email to saas@saasaccreditation.org