



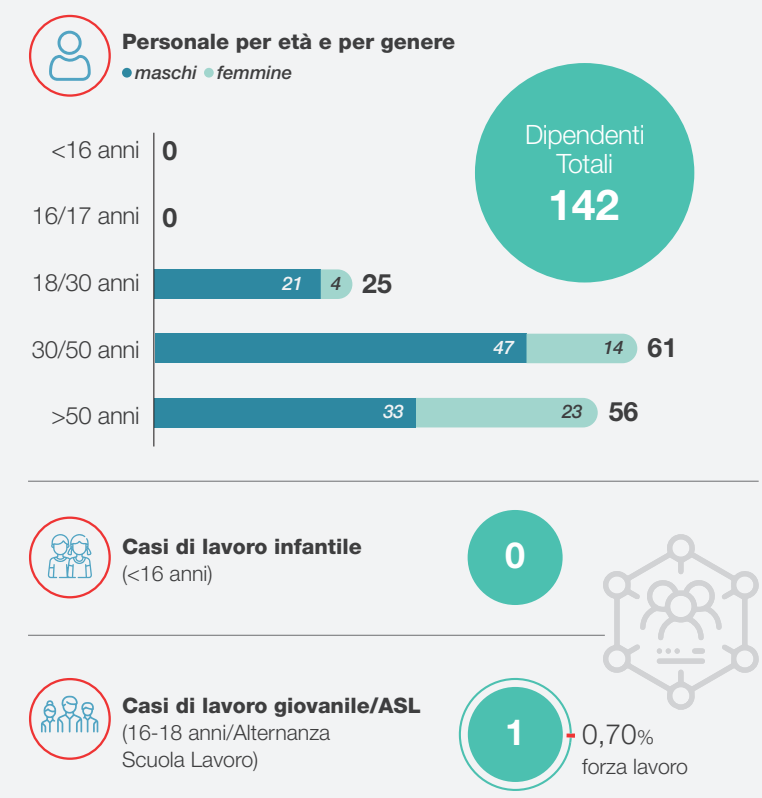
KPI SA8000 anno 2020



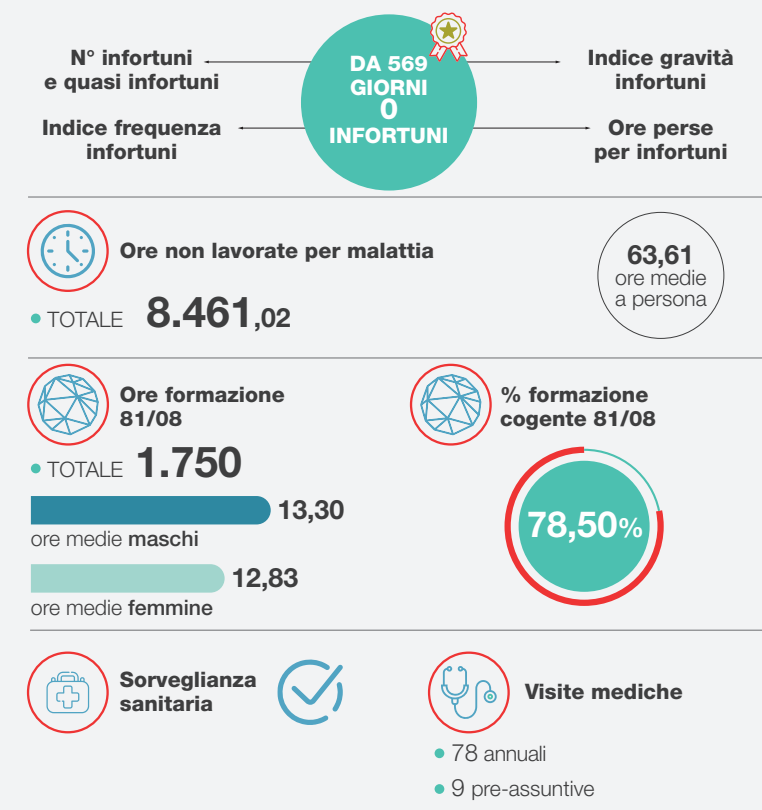
CISE - AZIENDA SPECIALE
CAMERA DI COMMERCIO DELLA ROMAGNA
FORLÌ-CESENA E RIMINI



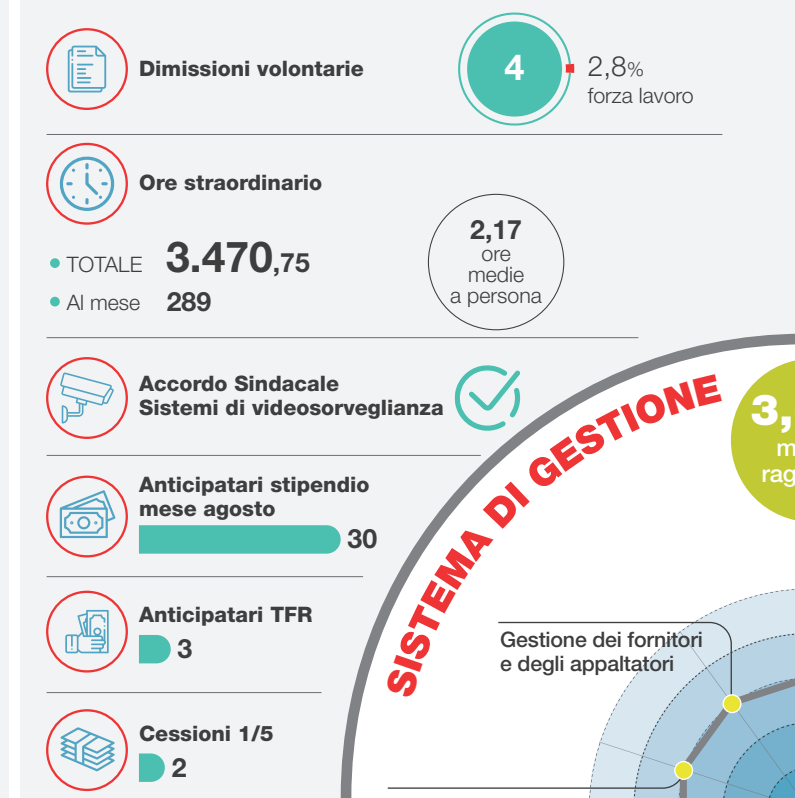
LAVORO INFANTILE 1



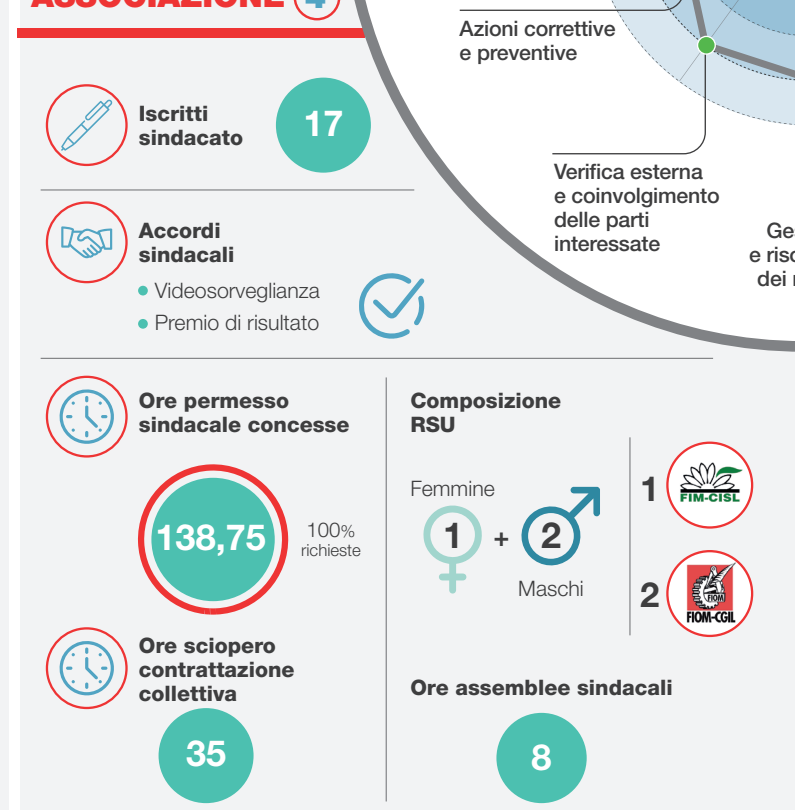
SALUTE E SICUREZZA 3



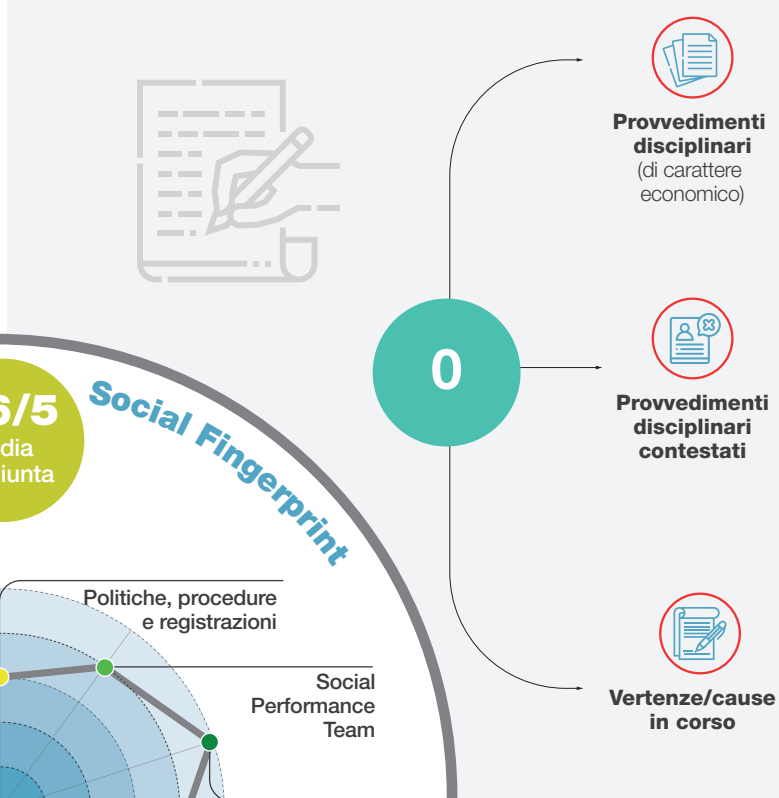
LAVORO FORZATO OBBLIGATO 2



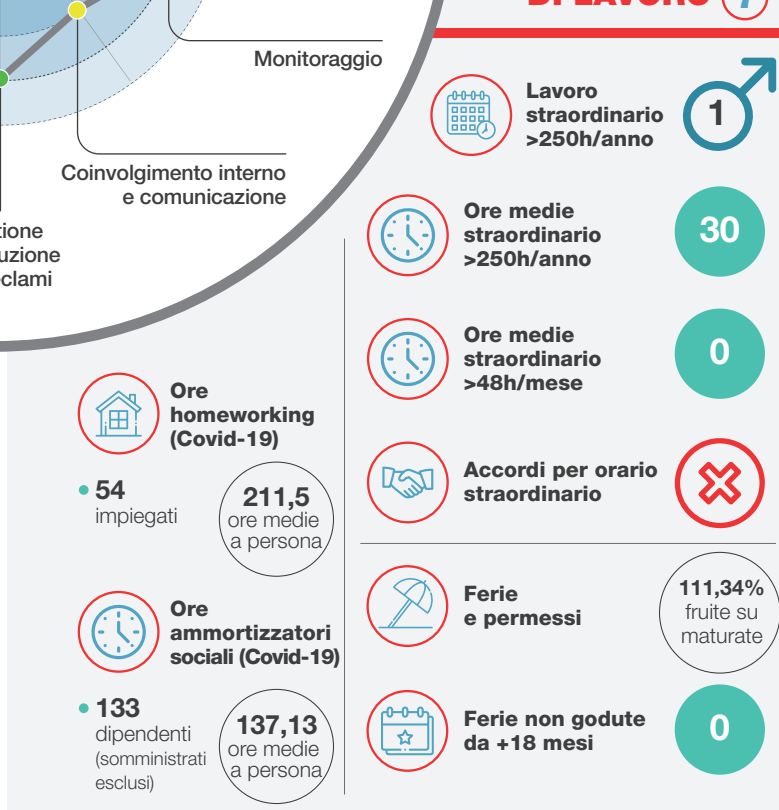
LIBERTÀ DI ASSOCIAZIONE 4



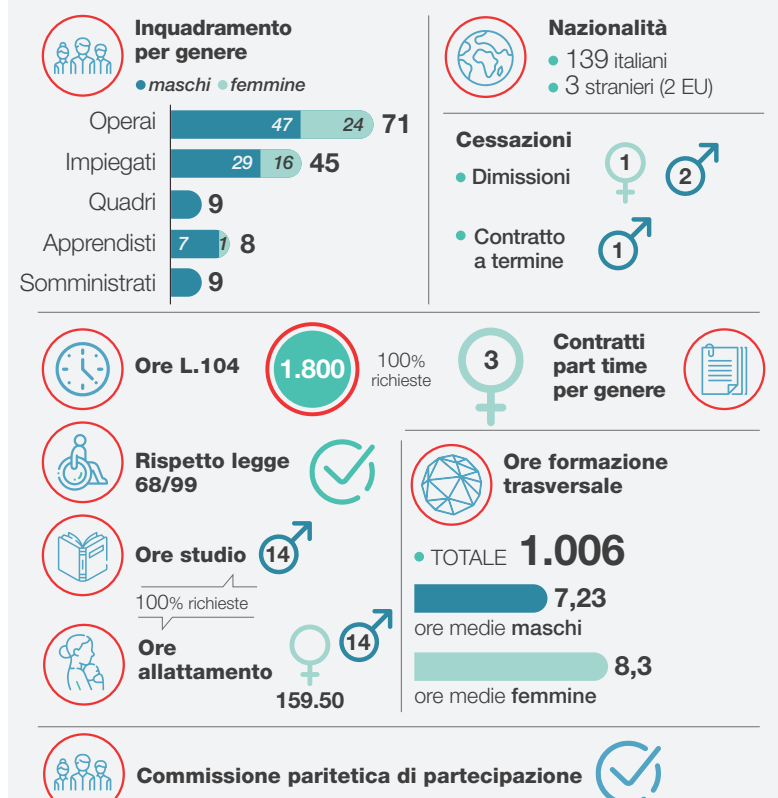
PRATICHE DISCIPLINARI 6



ORARIO DI LAVORO 7



DISCRIMINAZIONE 5



RETRIBUZIONE 8

